



An ISO 9001:2015 Certified

**RaniGoldhunga™**

**New Castle Disease Vaccine**



# Technical Factsheet

**Vaccine type:** Live viral vaccine

**Per dose:**

Effective Infective Dose (EID)<sub>50</sub> = 10<sup>7</sup>

Viral copies per dose= 10<sup>8</sup> copies per µl

**Thermo-stability:** Tablet formulation= 30 days in room ambient temperature

Over a year in 4 degree Celsius

**Administration method:** Ocular Or in drinking water

Clinical and Field Trial conducted: 2 farms (n=5000 Cobb500 birds)

**Challenge Trial:** Done with current velogenic Genotype VIIc highly virulent NDV strain. 100% protection against the current circulating strain (Genotype VIIc).

**Vaccination dose:** 1 dose at day 7 of 45 day broiler birds

Quarterly booster shot for 18 month layer birds

**Vaccine live virus clearance:** 5 days after administration

Antibody titer measure against NDV: ~ 4000

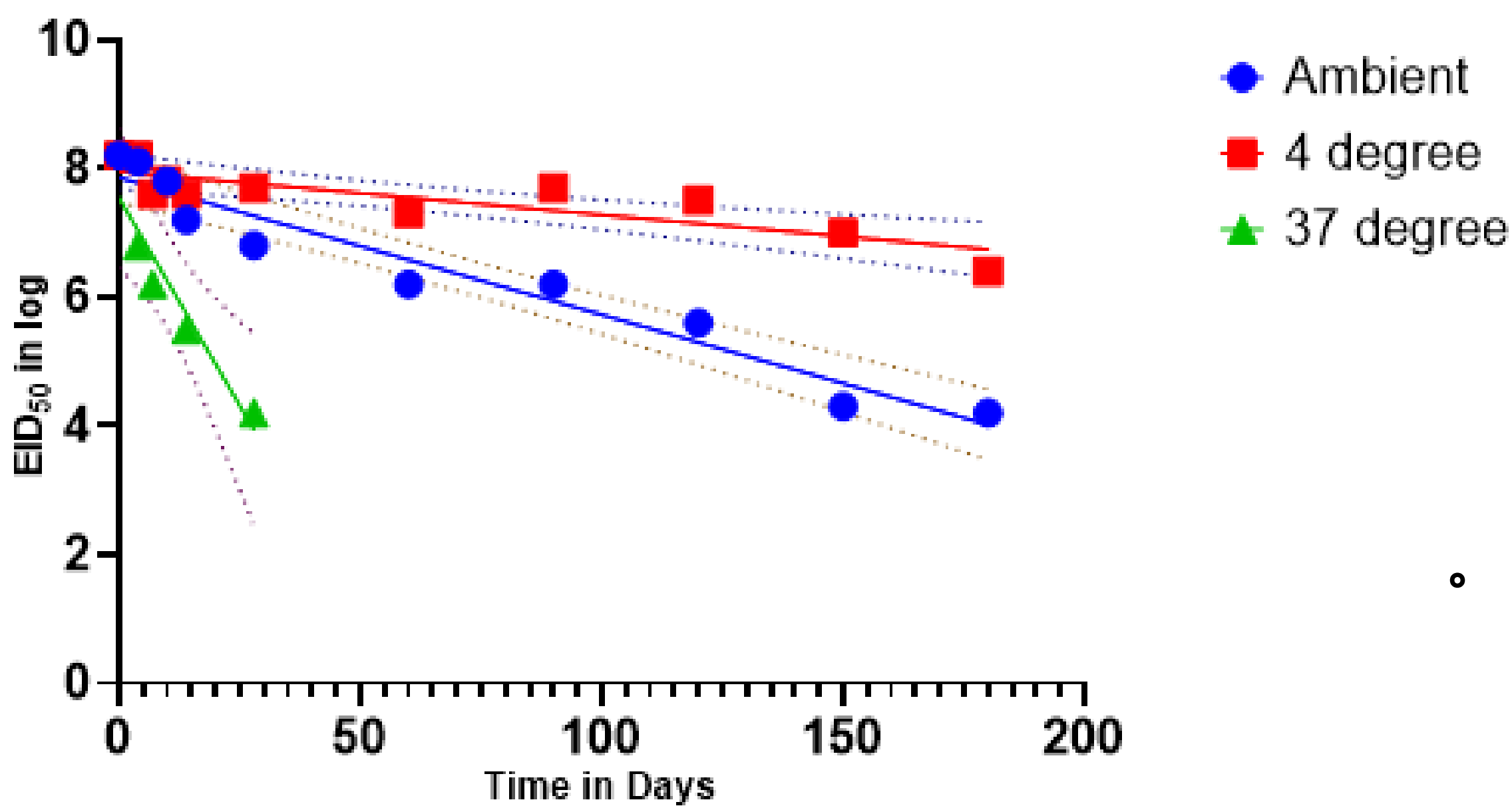
**Efficacy:** >88% with log 2<sup>3</sup> and above HI titer

**Available packaging:** 250 dose, 1000 dose, 50 dose Tablet formulation



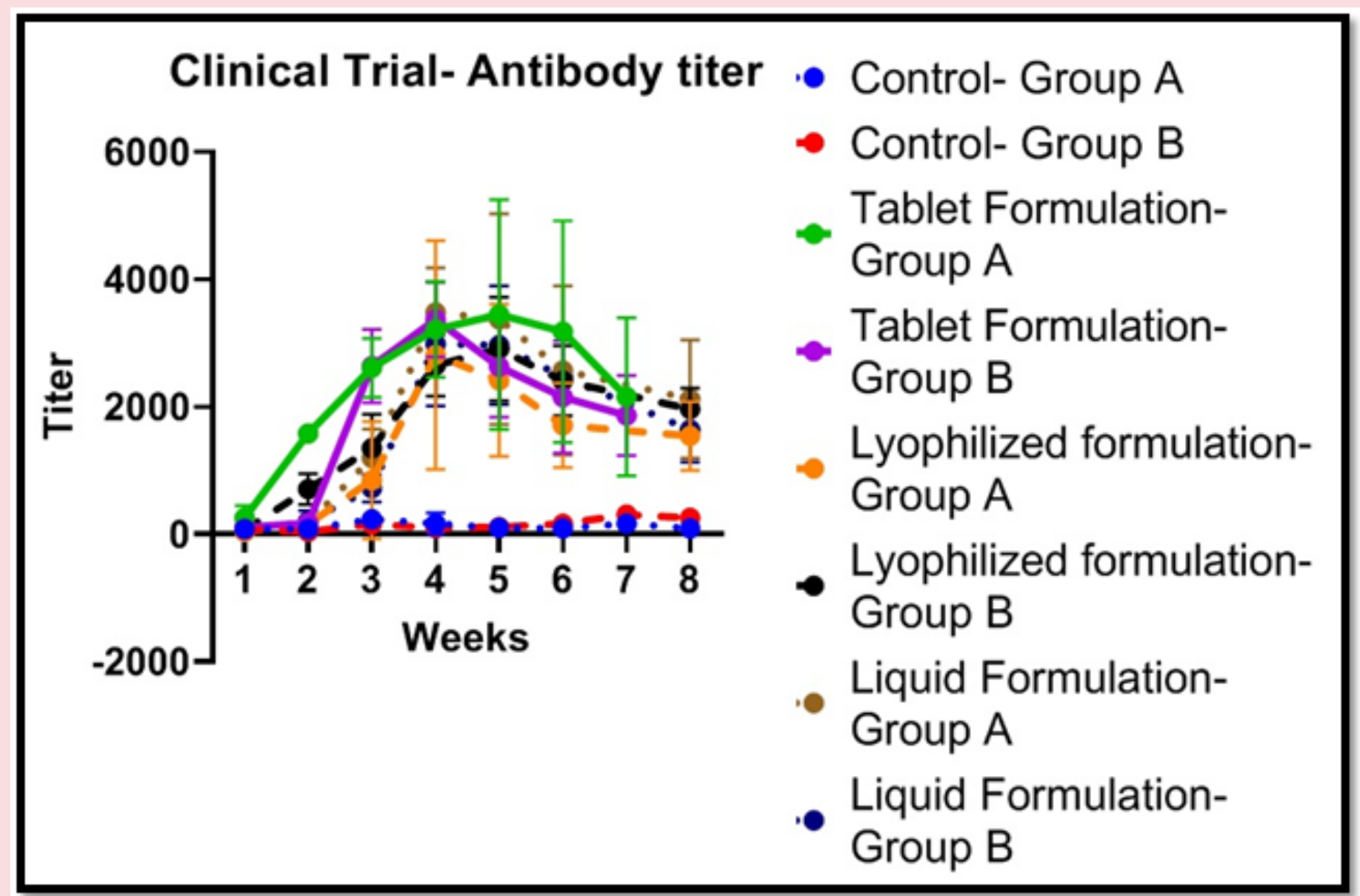
## Vaccine Stability

- Tablet & Lyophilized Vaccines are stable and effective at 30 Days at room ambient temperature (10° - 22°C)
- 8 days at 37°C
- Estimated over 1 year stable at 4°C

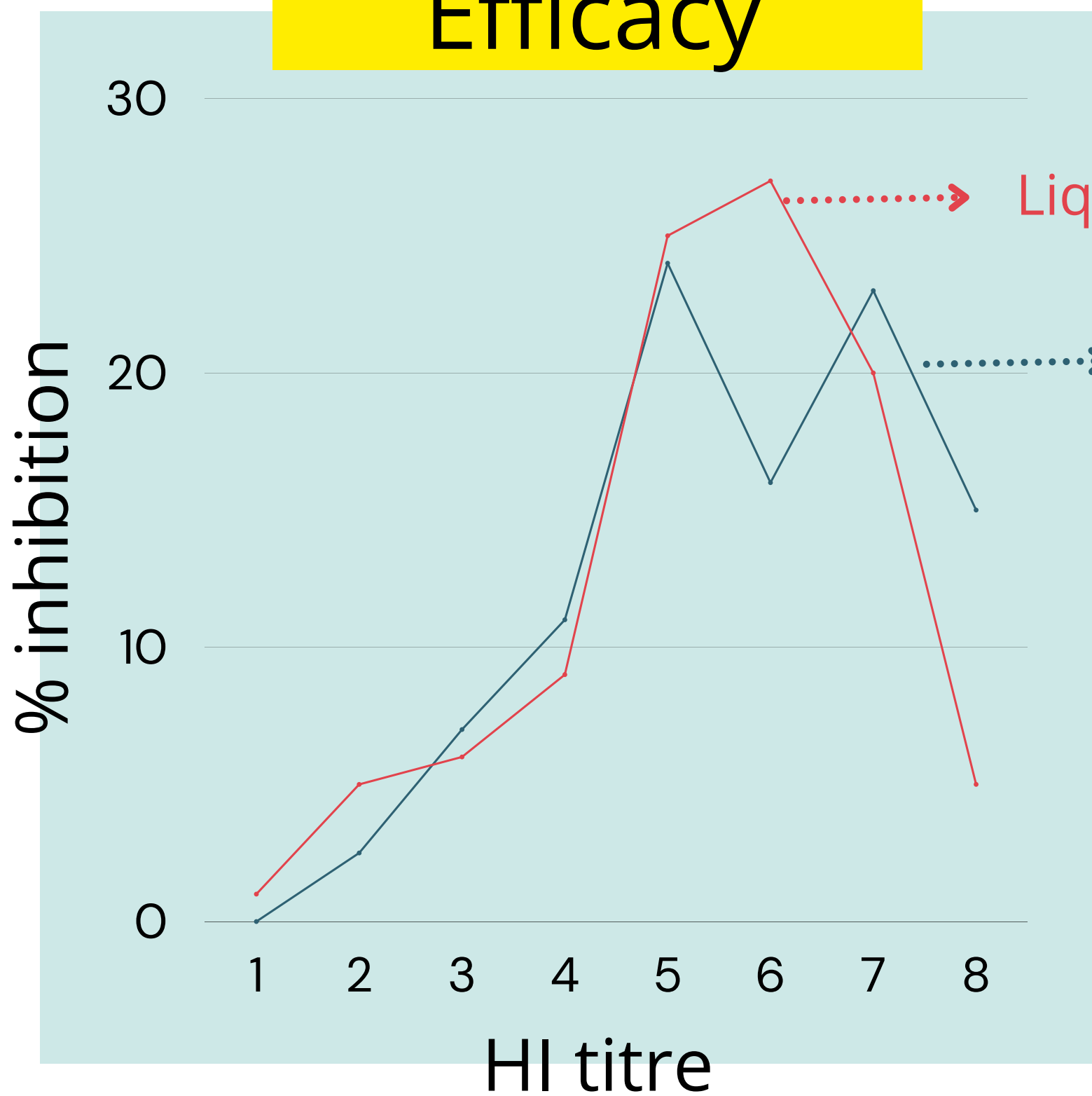


## Antibody Titre

- Antibody titre data showed peak at week 4 and antibodies lasts till week 8
- Chickens showed no adverse clinical signs and symptoms towards the vaccine



## Efficacy



Liquid formulation

Lyophilized and tablet formulation

**88.75%**

**87.55%**

High HI titre post vaccination



## CONTACT DETAILS

Prasuti Griha Marg  
Thapathali  
01-4101586  
info@biovacnepal.com

Production Facility:  
Nala, Banepa  
011-660021



## Biosecurity Check-list

### For Farm



Are birds of different ages and species kept separately?



Is the orientation of Poultry shed from East-West direction?



Is the farm constructed in an elevated area?



Are the disposal pit and sick room constructed on the extreme end of the site?



Do you keep record of your flocks and visitors?



Have the flocks been vaccinated?



Is the poultry shed, floor and walls disinfected?



Do you use separate clothing while entering the shed?

Are rodents and other birds kept away from the farm?



Do you restrict unauthorized people/vehicles from entering the farm?



Are the feeder and waterer disinfected and rinsed with water daily?



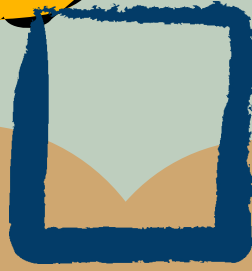
Have you spread lime powder in the shed 2-3 days before the arrival of new chicks?



Have you trimmed the vegetation around the farm premises?



Are the medicines being used only with a prescription?



Has 15 cm of litter been floored in the shed and raked?



Are the sick chicken being isolated from the flock?

#### CONTACT DETAILS



Prasuti Griha Marg  
Thapathali



01-4101586



info@biovacnepal.com



Production Facility:  
Nala, Banepa  
011-660021



# जैवीक सुरक्षा जाँच सूची

## फार्मका लागि

☐ फरक उमेरका कुखुराहरु अलग राखिएको छ ?



☐ कुखुरा र सुली गाड्ने खाल्दो जग्गाको कुनामा बनाएको छ ?



☐ के खोर पूर्व-पश्चिम दिशामा फर्किएको छ ?

☐ खोर उचाईमा बनेको छ ?



☐ खोरको भिट्टा र जमिन निर्मलिकरण गरिएको छ ?



☐ खोरमा अलगै सफा कपडा लगाउने गरिएको छ ?



☐ कुखुराहरु ले खोप लगाएका छन् ?

☐ कुकुरा र खोरमा प्रवेश गरेका मान्छेहरुको रेकर्ड राख्ने गरिएको छ ?

☐ अन्य जीव-जन्तु र चराहरुलाई खोरमा प्रवेश निषेध छ ?



☐ खोरमा प्रवेश गर्दा जुत्तालाई फुटबाथमा दुबाउने गरिएको छ ?



☐ अनुमती बिना अन्य मानिस / सामानका गाडीलाई निषेध गरिएको छ ?



☐ चल्ला आउने २-३ दिन अगाडी खोरमा चुना छर्कनु भएको छ ?

☐ दाना - पानी को भाडोलाई दैनिक निर्मलिकरण गरी पानीले पखालेको छ ?



☐ खोरमा १५ से.मी. जति भुस राखिएको छ ?



☐ खोर वरिपरीको झाडी काटिएको छ ?

☐ प्रिस्क्रिप्शन भएको औषधि मात्र प्रयोग भएको छ ?



☐ बिरामी चल्लाहरुलाई अलगै राखेको छ ?



**सम्पर्क कार्यालय :**  
थापाथली, काठमाडौं  
०१-४१०१५८६  
info@biovacnepal.com

०११-६६००२१  
नाला, बनेपा